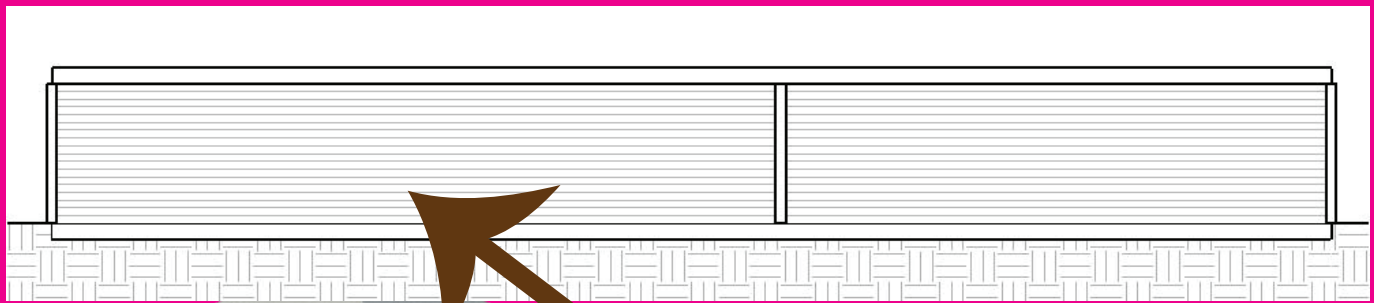


I think my school design is just so awesome because it means stuff. Not just a regular school, after all. The coolest part is the roof. Not your everyday roof either. That's why it's so cool. It's just like the pyramids they always build in Ancient Egypt. But those one's are bigger, being for the reason that they are not on top of a school. Egyptians are pretty smart. So that's why my school has a roof, only in the shape of a pyramid on top. Also, this font is all egypty. I think that everyone should be equal, so all the rooms are around the same size. Also, the front of the building is symmetrical. For the reason that people are symmetrical too, and all students are people. And also because, the two sides of the front of the building are equal just like I think people should be. The windows face forward so that the teachers can see when the students get there. I'm pretty sure that's all the windows that it needs, because schools have lots of lights in them.

The top floor of the school is a circle and the bottom floor



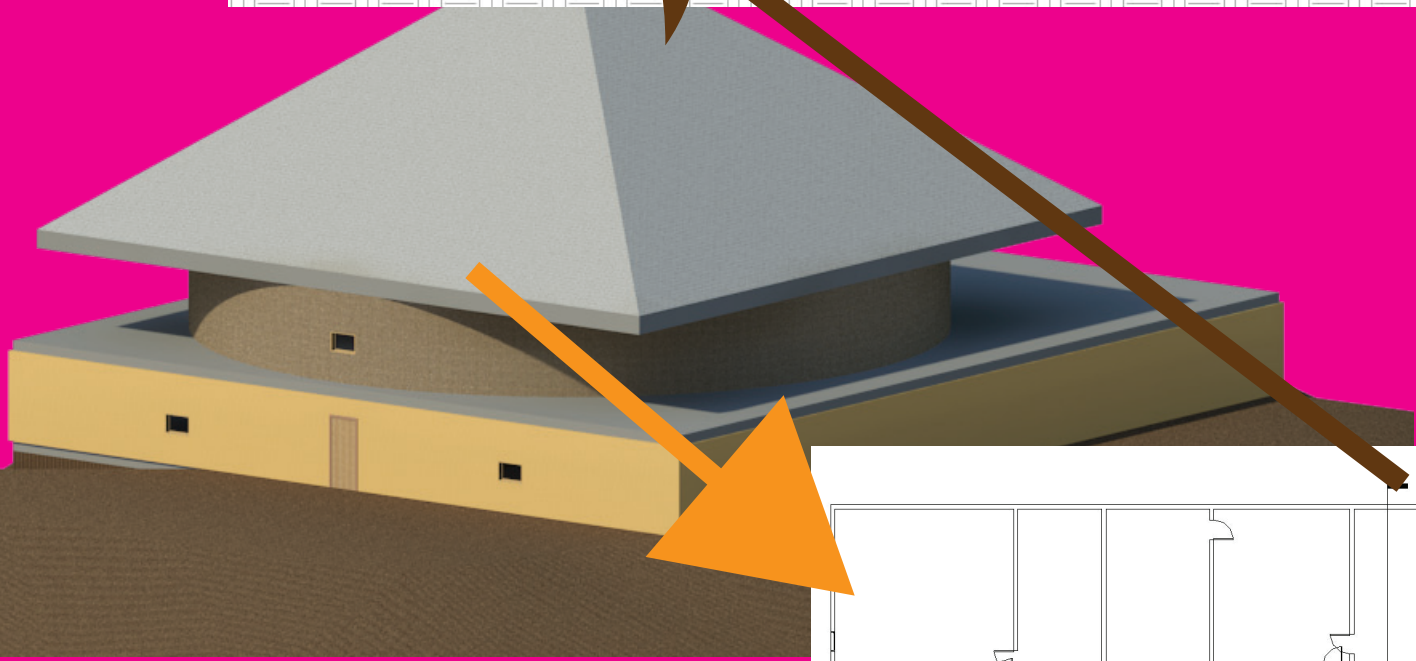
Therefore, different different. I hallway waste of every-in each so faces each way to class. school is knowing stuff, and can't even about your school



unless you go through each so that students wouldn't go up to the second floor to it's on the first floor. In is.



room. I wanted to make the offices hard to get to, though, accidentally go there. That's why you have to get to that part of the building, even though conclusion, this school is pretty great; indeed



square. because people are thought a would be a space. So one gets to go room and see many smiling day on the After all, about about you know

